

NINO

300

Owner's Guide

©1998 Philips Electronics North America Corporation. All rights reserved.

Information in this document is subject to change without notice. No part of this document may be reproduced or transmitted in any form or by any means, electronic or mechanical, for any purpose, without the express written permission of Philips Mobile Computing Group, a division of Philips Electronics North America ("Philips").

Philips or its affiliated companies, may have patents, patent applications, trademarks, copyrights, or other intellectual property rights covering the subject matter in this document. Except as expressly provided in any written license agreement from Philips, the furnishing of this document does not give you any license to patents, trademarks, copyrights, or other intellectual property of Philips or its affiliated companies.

Nino and the Nino Logo are either registered trademarks or trademarks of Philips in the United States and/or other countries.

Microsoft, MS-DOS, MS, Windows, Windows NT, Win32, ActiveSync, Schedule+, Outlook, Pocket Outlook, Pocket PowerPoint, Windows CE, and the Windows logo are either trademarks or registered trademarks of Microsoft Corporation in the USA and/or other countries.

Other products and company names mentioned herein may be the trademarks of their respective owners.

## END USER LICENSE AGREEMENT/WARRANTY

### IMPORTANT - CAREFULLY READ THE FOLLOWING TERMS AND CONDITIONS OF THIS AGREEMENT.

This End User License Agreement (“Agreement”) is a legal agreement between you, the user of Philips’ portable computing device (“Product”), and Philips Mobile Computing Group (“Philips”), the manufacturer of the Product. The Product comes with certain software, and associated documentation, which are installed on the Product and/or included in the original Product packaging on external media. (All such software and documentation, but specifically excluding Microsoft software and documentation, are collectively referred to as “Software”.) YOU DO NOT NEED TO SIGN THIS AGREEMENT IN ORDER FOR IT TO TAKE EFFECT. BY INSTALLING, COPYING, OR OTHERWISE USING THE SOFTWARE YOU ARE AGREEING TO BE BOUND BY THE TERMS OF THIS AGREEMENT. IF YOU DO NOT AGREE TO THE TERMS OF THIS AGREEMENT, PHILIPS IS UNWILLING TO LICENSE THE USE OF THE SOFTWARE TO YOU. IN SUCH EVENT, YOU MUST NOT OPEN THE SEALED PRODUCT OR SOFTWARE AND MUST PROMPTLY RETURN THE SEALED PRODUCT AND SOFTWARE TO THE PLACE YOU OBTAINED IT FOR A FULL REFUND.

1. **Grant of License.** Philips hereby grants you the non-exclusive right to use the Software only as installed on the Product or, for Software which is not already installed on the Product, to install and use the Software on a single Product.
2. **Ownership of the Software and Documentation.** You do not receive title or ownership to the Software, but merely the limited right to use the Software as specified in this Agreement.
3. **Restrictions.** You may not: (i) copy the Software except for one copy for back-up, archival purposes provided that the copy contains all of the original Software’s proprietary notices and is subject to all of the terms of this Agreement; (ii) modify, translate, reverse engineer, decompile, disassemble (except to the extent that this restriction is expressly prohibited by law) the Software or create derivative works based upon the Software; (iii) rent, lease, lend, or sublicense the Software; (iv) or transfer the Software except together with the sale or transfer of the Product and then only if you keep no copy of the Software, if you transfer all of the Software (including back-up copies), and if the recipient agrees to comply with, and be bound by, the terms of this Agreement.
4. **Termination.** This Agreement, and the licenses granted in it, is effective until terminated. This Agreement will terminate: (i) automatically if you fail to comply with any of the terms of this Agreement; or (ii) without prejudice to any other rights, upon written notice sent to you by Philips if Philips, in its sole judgment, believes that the Software is being used for a purpose not approved by it or that its rights are being jeopardized. In such event, you must destroy all copies of the Software and all of its component parts immediately upon receipt of such notice.
5. **Limited Warranty.**
  - a. For a period of one (1) year from the date of purchase by you, Philips warrants that the Product, excluding Software, shall function in substantial conformance with the performance requirements set forth in the end-user documentation under normal use and shall be free from defects in materials or workmanship.
  - b. For a period of ninety (90) days from the date of purchase by you, Philips warrants:
    - (i) that the Software in object code in the Product ROM (or on the removable storage device (“Miniature Card”) to be inserted in the miniature card socket of the Product, if applicable) shall function in substantial conformance with the performance requirements set forth in the end-user documentation under normal use; and
    - (ii) that the media on which such Software is furnished shall be free from defects in materials and workmanship.
  - c. For a period of thirty (30) days from the date of purchase by you, Philips warrants:
    - (i) that the Software in object code form on all external media shall function in substantial conformance with the performance requirements set forth in the end-user documentation under normal use; and
    - (ii) that the media on which such Software is furnished shall be free from defects in materials and workmanship.

- d. This Limited Warranty does not apply to the finish or cosmetic appearance of the Product.
- e. This Limited Warranty is provided only to you, the original purchaser of the Product. It is not transferable by you to any other person or entity.
- f. This Limited Warranty is void if failure has resulted from accident, abuse, or misapplication. Without limiting the foregoing, battery leakage, bending of the unit, a broken LCD display or any cracks in the LCD display will be presumed to have resulted from misuse or abuse.
- g. Your sole and exclusive remedy in the event of a breach of warranty shall be, at Philips' option, the replacement of the Product or the Software with a remanufactured or refurbished Product or refund of the price you paid, provided you return the Product to Philips together with a copy of your receipt. Should you need to take advantage of the Limited Warranty, contact Philips at 1-888-275-8356.
- h. No person is authorized to modify this Limited Warranty or to make additional warranties. No action for any breach of this Limited Warranty may be commenced more than one (1) year following the expiration date of the warranty.

**6. Warranty Disclaimer / Limitation of Liability.**

- a. THE FOREGOING LIMITED WARRANTY IS IN LIEU OF ALL OTHER WARRANTIES. EXCEPT AS SPECIFICALLY SET FORTH ABOVE, PHILIPS DISCLAIMS ALL WARRANTIES, INCLUDING WITHOUT LIMITATION, THE IMPLIED WARRANTIES OF MERCHANTABILITY AND FITNESS FOR A PARTICULAR PURPOSE.
  - b. PHILIPS SHALL NOT BE LIABLE FOR ANY LOSS OF USE, DAMAGES RESULTING FROM MATHEMATICAL INACCURACY, LOSS OF STORED DATA, OR INDIRECT OR CONSEQUENTIAL DAMAGES ARISING OUT OF, OR IN CONNECTION WITH, THE USE OR INABILITY TO USE THE PRODUCT OR ANY SOFTWARE EVEN IF PHILIPS HAS BEEN ADVISED OF THE POSSIBILITY OF SUCH DAMAGES. IN NO EVENT SHALL PHILIPS' LIABILITY EXCEED THE COST OF THE PRODUCT, WHETHER YOUR CLAIM IS BASED ON CONTRACT, TORT, WARRANTY, OR ANY OTHER LEGAL THEORY. SOME STATES OR JURISDICTIONS DO NOT ALLOW THE EXCLUSION OR LIMITATION OF IMPLIED WARRANTIES OR LIMITATION OF IMPLIED WARRANTIES OR LIABILITY FOR INCIDENTAL OR CONSEQUENTIAL DAMAGES, SO THE ABOVE LIMITATIONS MAY NOT APPLY TO YOU. IF IMPLIED WARRANTIES MAY NOT BE DISCLAIMED UNDER APPLICABLE LAW, THEN ANY SUCH IMPLIED WARRANTIES ARE LIMITED IN DURATION TO NINETY (90) CALENDAR DAYS AFTER THE DATE OF YOUR PURCHASE OF THE PRODUCT.
7. **Microsoft Software.** This Agreement does not apply to Microsoft software. Your rights to use, and restrictions on, Microsoft software are governed by a separate end user license agreement, included with the Product, which applies exclusively to Microsoft software.
8. **U.S. Government.** Restricted Rights. Pursuant to DFARS 227.7202 and FAR 12.212, the Software is subject to, and restricted by, this Agreement. Use, duplication, or disclosure by the United States Government is governed solely by the terms and conditions contained herein.
9. **Choice of Law.** This Agreement is governed and construed under the laws of the State of California, except those portions pertaining to conflicts of law. You consent to the exclusive jurisdiction of the state and federal courts sitting in the State of California.
10. **Entire Agreement.** This Agreement constitutes the final, exclusive and complete agreement with you concerning the Software. It may not be amended or altered except in a written document signed by you and an authorized representative of Philips.

# Contents

## **Welcome! / 1**

## **A Tour of the Nino / 2**

## **First Steps with the Nino / 4**

*First install the rechargeable battery pack / 4*

*Now turn on the Nino / 6*

*Some useful settings / 9*

## **Docking and Synchronizing / 10**

*Now set up the Nino Dock and perform  
the initial synchronization with your PC / 10*

*Installing Windows CE Services / 11*

*About Synchronization / 14*

## **Using the Nino / 15**

*Keeping your data safe / 16*

*Using a modem / 16*

*Nino input methods / 17*

*First steps with T9 / 18*

*First steps with smARTwriter / 19*

*First steps with Pocket Commander / 20*

*First steps with Expense Manager / 21*

*First steps with Windows CE Software / 22*

*Using Infrared Communications / 23*

## **Adding a Data Storage Card / 24**

## **Taking Care of Your Nino / 26**

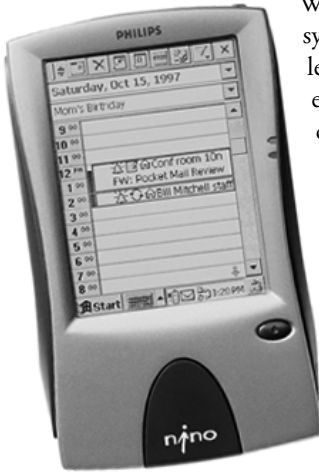
## **Troubleshooting / 27**

## **Nino Specifications / 28**

*Regulatory information / 29*

## Welcome to the Nino™

—the Philips Personal Companion that keeps you up-to-date when you're on-the-go.



With its unique ergonomic design and automatic synchronization with your primary PC, your Nino lets you easily and quickly find or modify your essential personal information—including your calendar, tasks, contacts, e-mail, Internet information services (channels), and much more.

Utilizing the Microsoft® Windows® CE operating system for the Palm-size PC, the Nino also provides significant software extras, including T9™ Text Input from Tegic Communications, Pocket Commander™ voice-based navigation software and smARTwriter handwriting recognition software from ART, and an Expense Manager program.

### This guide will help you get started.

For more detailed information, you can turn to a variety of resources:

- **On-line help**—Select Help from the Start menu to get information about specific features of Nino software.
- **The Microsoft Palm-size PC User's Guide**—Look at this manual for a comprehensive guide to Windows CE for the Palm-size PC.
- **The Philips Nino CD**—Go to this CD for documentation about the extra software bundled with your Nino, as well as other useful information.
- **The Nino Web site** at <http://nino.philips.com>—Visit this site for the latest Nino news, tips, and support information.
- **The Microsoft Windows CE Web site** at <http://www.microsoft.com/windowsce/>—Visit this site for the most recent information about Windows CE.

# A Tour of the Nino

## Nino front and right side

### On/Off-Backlight button

Press this button to turn the Nino on or off. Press and hold to turn backlighting on or off.

### Indicator lights

The top light goes on when an alarm you've set is activated. The bottom light blinks green when the batteries are recharging.

### Dock/serial connector

Connects the Nino to the Nino Dock.

### Telecom port

Connect the US Modem Click-on or the European modem cable here.

### AC adapter port

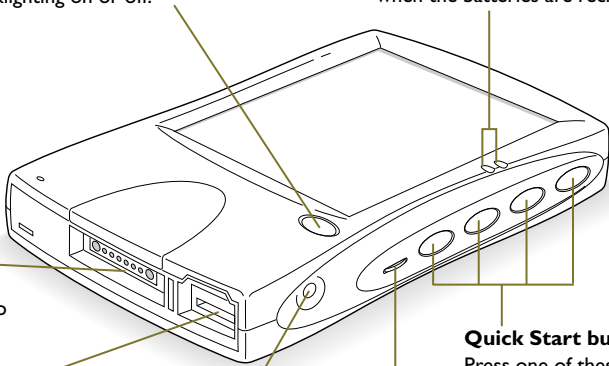
Plug in the Nino AC adapter here.

### Contrast control

Turn this control to increase or decrease screen contrast.

### Quick Start buttons

Press one of these customizable buttons to turn the Nino on and start a particular program, or to switch instantly between programs.



## Nino left side

### Speaker

### Scroll up control

Press here to scroll up in a list.

### Action button

Functions like the Enter key on your PC.

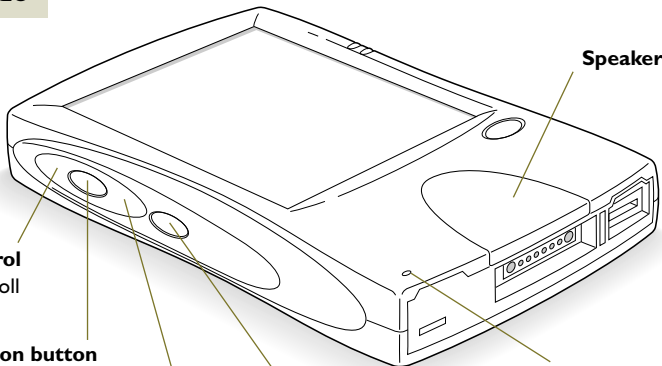
### Scroll down control

Press here to scroll down in a list.

### Exit button

Functions like the Escape key on your PC.

### Microphone



## Nino back

### CompactFlash data storage card compartment

Install a CompactFlash card here.

### Infrared port (at top of unit)

Send or receive information wirelessly via this port.

### Soft reset button

Press this recessed button to reset the Nino without losing information.

### ROM upgrade compartment

Install future Operating System upgrades here.

### Stylus slot

Holds your Nino stylus.

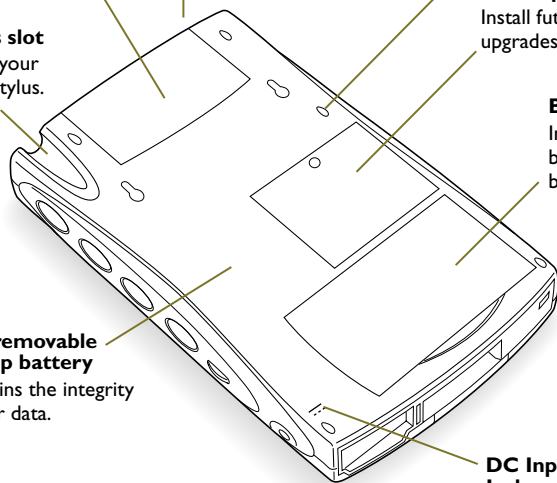
### Battery compartment

Install the rechargeable battery pack or AA batteries here.

### Non-removable backup battery

Maintains the integrity of your data.

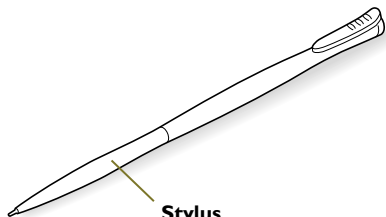
### DC Input Jack symbol



## Other Nino components

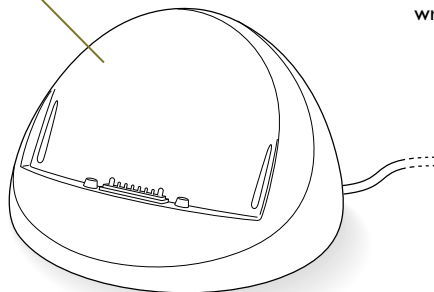
### Nino Dock

Place the Nino in the Nino Dock to synchronize information with your desktop PC and to recharge the batteries.



### Stylus

Use only the Nino stylus to write or tap on the screen.





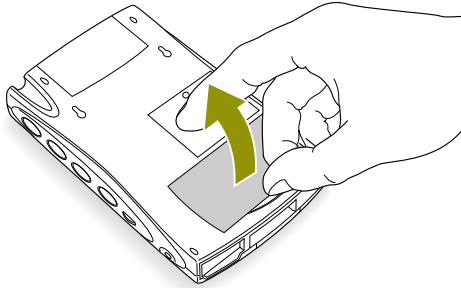
# First Steps with the Nino

## First install the rechargeable battery pack

You can provide power to the Nino in three ways: 1) the AC power adapter, 2) the Nino rechargeable battery pack, or 3) AA batteries. If connecting to AC power is not convenient and you would like to try out your Nino immediately, you can install the AA batteries, being careful to correctly align the positive and negative ends. *Be aware that data you enter may not be properly maintained until the built-in backup battery is adequately recharged.*

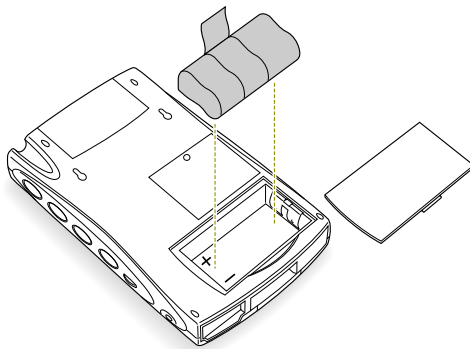
Philips recommends that you first install the rechargeable battery pack and leave your Nino plugged in overnight. Follow these steps:

### 1 Open the door of the battery compartment.



### 2 Insert the rechargeable battery pack.

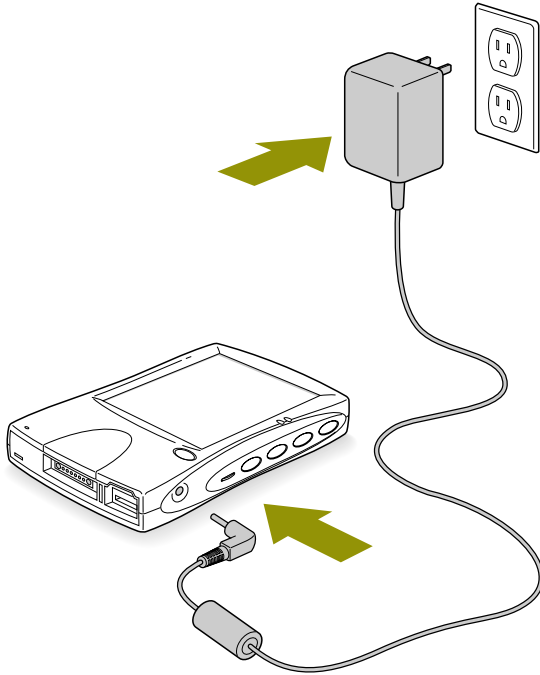
Only use the Nino rechargeable battery pack.



**3 Close the battery compartment door.**

**4 Plug in the Nino with the Nino AC adapter.**

Only use the AC adapter provided with the Nino.



The green indicator light blinks while the rechargeable battery pack is charging. **Leave the Nino plugged in for several hours (overnight is best).** The indicator light goes off when the rechargeable battery pack is fully charged.

## Now turn on the Nino

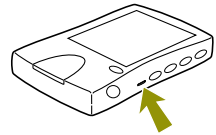
**1 Press the On/Off button once.**

The Nino Welcome screen appears. In a moment, it is replaced by the Windows CE Welcome screen.



**2 You may want to adjust screen contrast.**

Use the control on the right side of the unit.

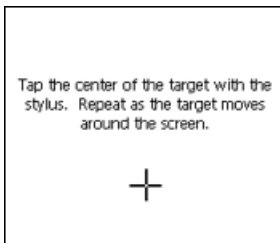
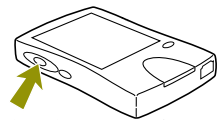


**3 If you'd like to turn on backlighting, press and hold down the On/Off button again for more than one second.**

**4 Press the Action button.**

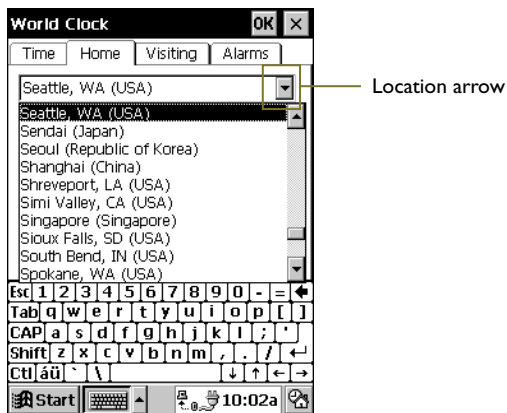
Nino now asks you to calibrate the unit by tapping a sequence of screen locations.

Tap gently but firmly. When you have completed a series of taps, you'll be asked to press the Action button again.



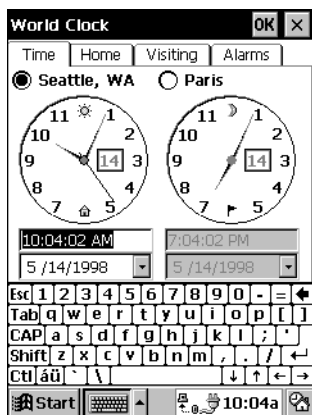
## 5 Now set your home location.

Tap the location arrow to see a list of cities. Choose your location (or one nearby, for the moment). Then tap **OK**.



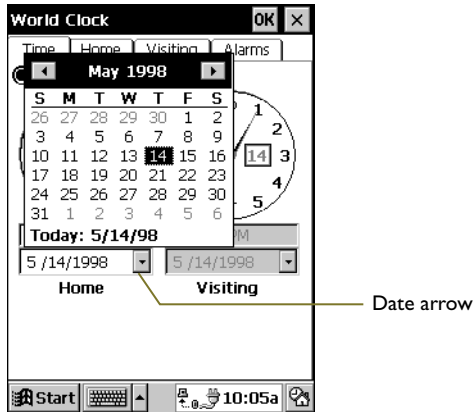
## 6 Then set the time, using the on-screen keyboard.

To get a colon (:), tap the Shift key.



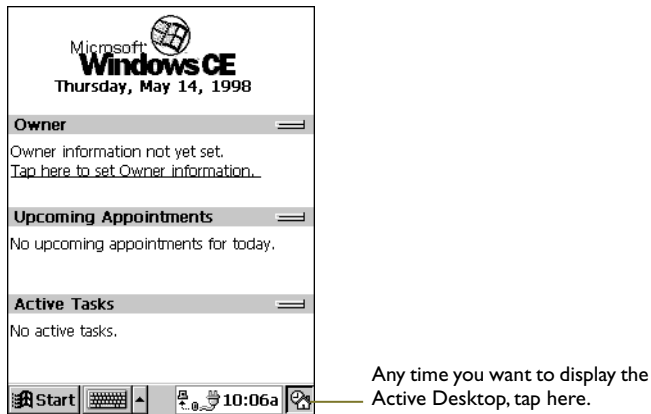
## 7 Then set the date.

Tap the date arrow to display a calendar. Navigate to the correct month and tap on the correct day. Then tap **OK**.



A message tells you, “Setup is complete.”

## 8 Tap once to go to the Active Desktop.



The Active Desktop can display important information such as your appointments and tasks for the day. Notice that your owner information is not yet available. It's a good idea to provide it now.

## 9 Tap “Tap here to set Owner information.”

Use the on-screen keyboard to fill in your personal information. Scroll down to see all the fields available. When you’re finished, tap **OK**.



You can make the keyboard disappear and reappear by tapping here.

Your personal information now appears on the Active Desktop.

## Some useful settings

**To check the state of the rechargeable batteries and the built-in backup battery**—Tap Start > Settings > Power.

**To modify the contents of the Active Desktop**—Tap Start > Settings > Display > Desktop tab.

**To customize the Start menu**—Tap Start > Settings > Taskbar > Start Menu Items tab.

**To set one or more alarms**—Tap Start > Settings > World Clock > Alarms tab.

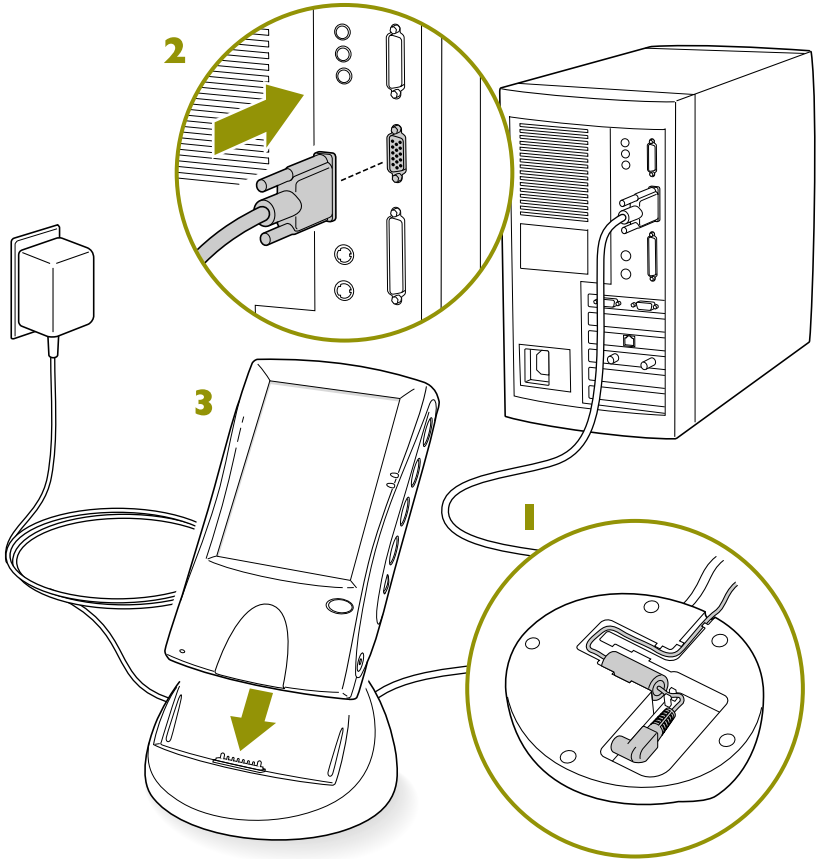
**To set time, date and number formats for your country**—Tap Start > Settings > Regional Settings.

# Docking and Synchronizing

## Now set up the Nino Dock and perform the initial synchronization with your PC

Place the Nino Dock in a convenient location near your desktop PC and then follow these steps:

- 1 Connect the AC adapter to the dock.**  
The connection is on the bottom of the dock.
- 2 Then connect the dock serial cable to a serial port on your PC.**
- 3 Put the Nino on the Nino Dock and make sure it is on.**



## Installing Windows CE Services

To prepare your PC for a “partnership” with your Nino, you need to install Windows CE Services from the Microsoft CD.

**NOTE** If you will be connecting the Nino via a Remote Access Server (RAS), if you run the Windows NT® operating system with a service pack, or if you want to use the infrared connection to dock, you need to follow the special installation instructions in the *Microsoft Palm-size PC User’s Guide*.

Before you start, save the work on your PC and quit all programs. If this is the first time you are installing Windows CE Services on your PC, you may also need to use your Windows CD during the process.

### I Insert the Desktop Software for Windows CE CD in your CD-ROM drive.

The Windows CE Services Welcome screen appears automatically. (If it doesn’t, select Run from the Start menu, type *d:startup*, where *d* is the name of the drive with the Microsoft CD, and press Enter.) The Installation Wizard presents welcome and licensing information, asks you to fill in your name and company, and then choose a setup.





**2 Click the Typical option and follow the on-screen instructions.**

When you have installed the software, the Get Connected dialog box appears:



**3 Make sure the Nino is turned on and in the Nino dock. Then click Start.**

It takes a few moments for the software to locate your Nino and to configure communication settings. When the process is finished, the Mobile Devices window appears on your PC screen.

**4 Wait a few moments until the New Partnership Wizard appears.**



(If Windows CE Services fails to detect your Nino, refer to the section on communications settings in the *Microsoft Palm-size PC User's Guide*.)

**5 Use the New Partnership Wizard to establish the PC-Nino partnership.**

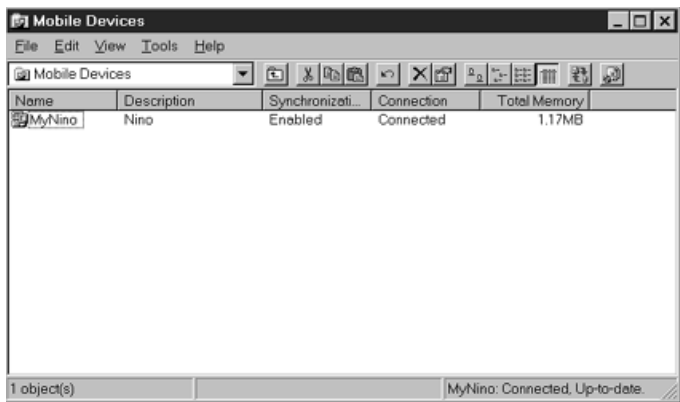
Fill in the device name and description (“Nino”). Leave the “On Connect” option checked for synchronization. This will synchronize your Nino each time it is connected.

**6 A few moments after the partnership is established, ActiveSync on your PC automatically starts the initial synchronization process.**

Information from desktop applications such as Microsoft Outlook is transferred to your Nino.

During this process you may see a screen asking you to “Combine” or “Discard” information on the PC and the Nino. Choose **Combine**.

When initial synchronization is successfully completed, your PC desktop displays the Mobile Devices window with the message “Connected, Up-to-date” in the lower right corner.



During installation, Windows CE Services places a Mobile Devices shortcut on your desktop. (Mobile Devices also shows up as an entry in My Computer.) For details about the Mobile Devices program window, see the *Microsoft Palm-size PC User's Guide*.

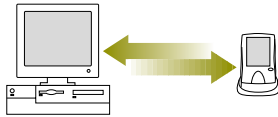
**NOTE**

**To disconnect the Nino from the PC, take it out of the Nino Dock.**

## About Synchronization

You can synchronize your Nino and your desktop PC to make sure that both devices have the most up-to-date information.

Synchronization starts automatically when you put the Nino in the Nino Dock (if you left the “Automatically synchronize upon connecting” option checked when you established the Nino-PC partnership). Exactly what gets synchronized depends on the settings you choose from ActiveSync Options on the Tools menu in the Mobile Devices window.



### What can get synchronized?

**Contacts, Calendar, and Tasks**—Information stored in these programs on your Nino is synchronized with Schedule+ or Outlook on your desktop computer. The most recently modified information, wherever it resides, replaces the older information.

**Inbox Messages**—Messages in Exchange or Outlook on your desktop computer are copied to your Nino. Messages you created on your Nino are stored in your Outbox and transferred to your desktop for transmission.

**Files**—Files in NoteTaker and Voice Recorder on your Nino are synchronized with files in the My Documents folder (Windows 95), or your Personal folder (Windows NT) on your PC.

**Channel Information**—The most recent information for the channels you subscribe to on your PC is downloaded to your Nino. (A “channel” is an Internet information service that automatically sends out news, stock updates, or other information of interest.) If you also receive channel information on your Nino, these two sources are merged and only the most recent information appears on the Nino.

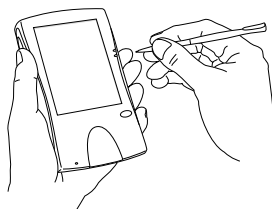
### Resolving conflicts

If an item such as a task or appointment has been modified on both your desktop PC and your Nino, you’ll need to decide which version you want to keep. You can do this automatically or manually. See the *Microsoft Palm-size PC User’s Guide* for details.

# Using the Nino

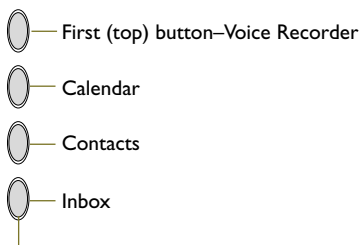
## **One-handed operation:**

You can operate the buttons on the Nino with one hand, leaving the other hand free to use the stylus, or for some other task.



## **Quick Start buttons:**

If the unit is off, pressing a Quick Start button turns it on and starts a program. If the unit is on, pressing one of these buttons switches to a different program.



Tactile dots let you identify each button with your fingertips.

The Quick Start buttons are configurable. To assign a different program to a button, tap Start > Settings > Buttons > Program tab.

**Button combinations:** You can press and hold one button, and then press a second button to produce certain results.

*Stylus calibration:* Press and hold the Exit button. Then press the Action button.

*Tab:* Press and hold the Action button. Then press the Scroll Up control.

*Back tab:* Press and hold the Action button. Then press the Scroll Down control.

**Microphone:** Position yourself about 20 cm (8 inches) away from the microphone when recording a voice message or giving voice commands.

**Speaker:** Control the volume of the speaker by choosing Volume & Sound from the Settings menu.

## Keeping your data safe

Your Nino comes with a non-removable, built-in lithium backup battery that will maintain the integrity of your data in the absence of other power sources. Note these important points:

- You can check the status of the backup battery by tapping Start > Settings > Power.
- It may take a few days of normal usage before this backup battery is fully recharged and appears as **good**. (It recharges when you are plugged in to AC power or when you are running the Nino on the rechargeable battery pack or AA batteries.)
- To prevent the backup battery from running down and failing to protect your data, do not leave the Nino for an extended period of time without AA batteries or the rechargeable battery pack installed, or without a connection to AC power.
- When AA batteries become low, replace them promptly. If the rechargeable battery pack is low, recharge it as soon as possible.
- Don't use NiCad rechargeable batteries with your Nino. Only use the Nino rechargeable battery pack or AA batteries.

## Using a modem

You can use your Nino and a U.S. Nino Modem Click-on or a European Telephone Connectivity Kit (TCK) to connect to:

- An Internet Service Provider (ISP)
- A corporate network through a Remote Access Server (RAS) connection
- A remote desktop computer via RAS
- A remote desktop computer via dial-up connection

Some U.S. models of the Nino include the Nino U.S. Modem Click-on.

For your convenience, settings information about many ISPs is maintained at the Nino Web site at <http://nino.philips.com>.

# Nino input methods

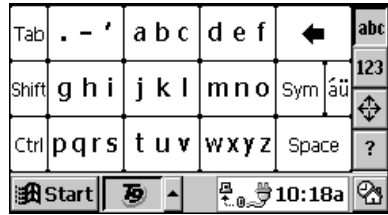
## Keyboard Input Methods

### Windows CE keyboard



The Windows CE keyboard is a replica of the familiar keyboard on your PC. Tap the **áü** button to get the international character set.

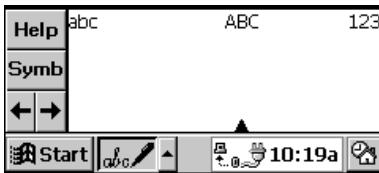
### T9 Text Input keyboard



The T9 Text Input keyboard is provided as a Nino software extra. As you tap, T9 matches the word you are entering. Larger keys make it easier and faster to enter information.

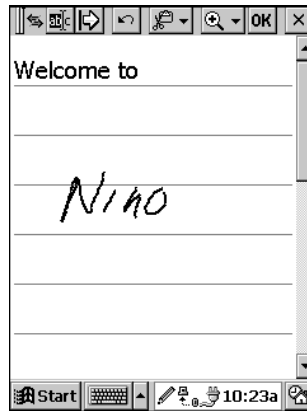
## Handwriting Input Methods

### Jot Character Recognizer

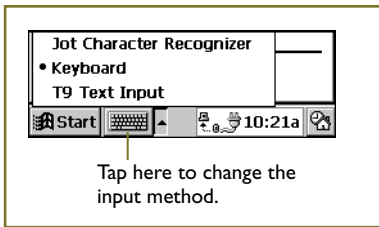


The Jot Character Recognizer included with Windows CE lets you write characters in a defined area on screen. With Jot, you need to learn to write the way the program expects characters to be formed.

### smARTwriter



The smARTwriter application provided as a Nino software extra lets you write anywhere on the screen. You can train the program to recognize your handwriting style.



Give yourself time to experiment with all these input methods for a few days to find the one or two you like best.

Also built into your Nino is Pocket Commander, a voice command application that lets you navigate and control Nino software with verbal commands.

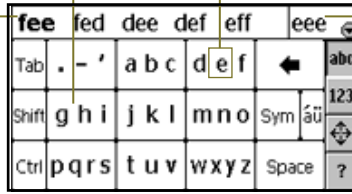
## First steps with T9

T9 Text Input lets you simplify and speed up tapped input. T9 provides large keys on an easy-to-read keypad.

You can tap anywhere on one of the nine keys.

Or you can type precisely on a particular letter to add a custom word to the T9 database.

T9 displays words matching the keys you've tapped so far. Usually your word will be first on the list. Tap Space to input the first word, or tap your intended word on the list.



The exact letters you've typed appear here. This is how you enter a word that might not yet be in the T9 custom word database.

To activate the T9 keyboard on the Nino, tap the arrow on the task bar to display the Input Methods menu. Then select T9 Text Input.




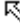
Tap here to display the Input Methods menu.

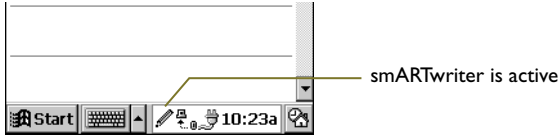
To change options for T9 (such as keyboard size), first make T9 the input method. Then tap Start > Settings > Input Panel > Options.

Full documentation for T9 is available on the Philips Nino CD. Click the Manuals tab on the Welcome screen.

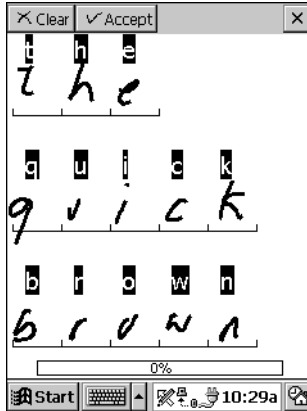
## First steps with smARTwriter

smARTwriter is a handwriting recognition program that lets you write input for any program anywhere on the Nino screen.

When you turn on your Nino, smARTwriter launches automatically and its icon appears in the icon tray in the inactive state. Tap this icon to activate  or inactivate  smARTwriter.



First use the Quick Trainer program to show smARTwriter how you make letters. Tap Start > Programs > smARTwriter > Quick Trainer. It takes five to ten minutes to complete a Quick Trainer session.



Full documentation for smARTwriter is available on the Philips Nino CD. Click the Manuals tab on the Welcome screen.

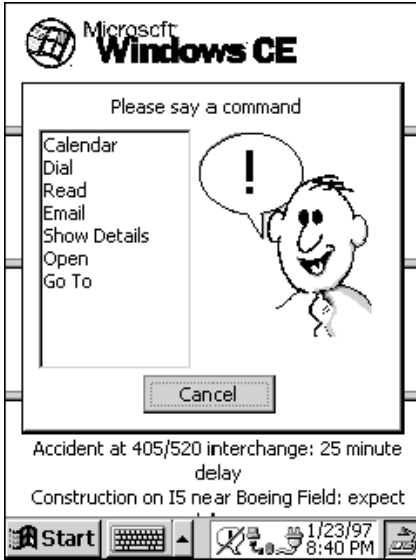
**NOTE** If smARTwriter is active and you are experiencing difficulty tapping a check box or using other Nino software controls, make smARTwriter inactive by tapping on its icon in the icon tray.



## First steps with Pocket Commander

Pocket Commander is a voice command program that lets you navigate Nino software with spoken commands rather than by tapping with the stylus.

The Pocket Commander recognizes the following commands:



**Calendar**—to open the Calendar application

**Dial**—to dial the phone number of a contact

**Email**—to generate an e-mail form preaddressed to a contact

**Go To**—to launch an application

**Open**—to open a file or note

**Read**—to read back a contact's phone number through the Nino speaker

**Show Details**—to display details about a contact

**Voice mail**—to generate an e-mail voice memo to a contact

After you give one of these general commands, Pocket Commander prompts you to give a second or third command to complete the operation. These additional commands are standard or uniquely determined by information such as contact or application names on your Nino. For example, to call Susan at work you would say three commands: "Dial" "Susan" "Work".

To launch and use Pocket Commander, press and hold the second, third, or fourth Quick Start button on the right side of the Nino. The Pocket Commander icon appears in the icon tray. (You can also use the program by tapping this icon.)



Pocket Commander icon

You must train Pocket Commander to recognize your pronunciation of commands. The first time you use the program, a message appears saying: "There are no trained activation words. Would you like to train them now?" Tap YES and then use the General Commands Training Wizard.

**NOTE** You might choose to first train just a few commands and skip the others until you are familiar with how the program works.

For a complete description of the Pocket Commander application, see the Pocket Commander manual on the Philips Nino CD. Click the Manuals tab on the Welcome screen.

## First steps with Expense Manager

The Expense Manager application lets you conveniently keep track of your business or other expenses while you're on-the-go. Later you can transfer the information to Excel on your desktop PC.

You can record information about hotel, car rental, food, or any other type of expense. You can also record hours and miles for a particular project or client.

For international work, Expense Manager lets you record values in local currency at the current exchange rate. The totals are automatically converted to your home currency.

To install the Expense Manager software on your Nino, follow these steps:

- 1 Put the Nino in the Nino Dock and insert the Philips Nino CD in your PC's CD-ROM drive.**  
The Welcome screen appears automatically.
- 2 Click the Expense Manager tab at the top of the screen.**
- 3 Follow the on-screen directions provided by the Expense Manager Setup program.**

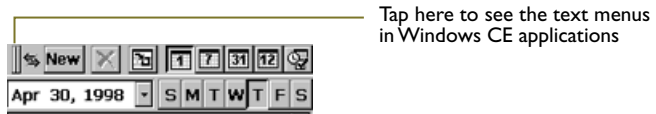
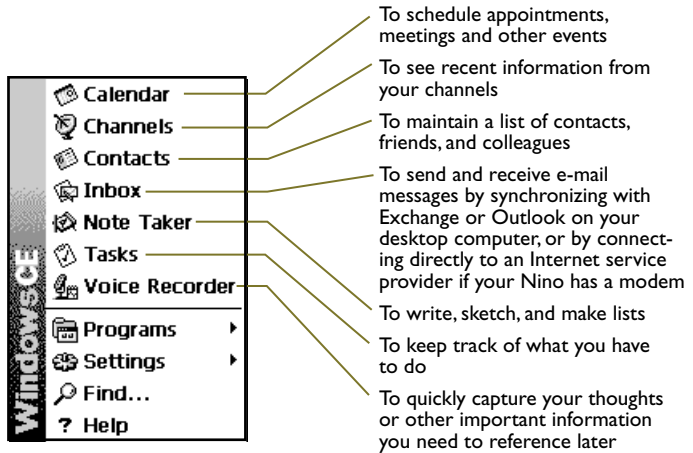
The software is installed on your Nino.

To launch Expense Manager tap Start > Programs > Expense Manager.

Full documentation of the Expense Manager application is available on the Philips Nino CD. Click the Manuals tab on the Welcome screen.

## First steps with Windows CE Software

The programs that are part of Windows CE include:



Other Windows CE applications include Calculator and Solitaire. (You'll find them on the Programs menu.)

For more detailed information about these programs, see the *Microsoft Palm-size PC User's Guide*.

## Using Infrared Communications

You can use infrared (IR) beaming for wireless transfer of information between your Nino and another Nino, or any other Windows CE device that is IR-ready.



### Some useful tips

- Position the Nino IR port and the IR port of the other device so that they are lined up and within three feet (one meter) of each other.
- Make sure that neither IR port is blocked.
- Turn off fluorescent lights in the immediate area (some types of fluorescent lamps can interfere with IR communications). Or move to a location with different lighting.

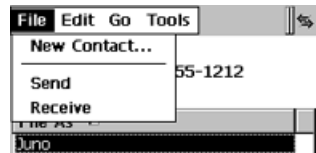
### Sending and Receiving

You can transfer notes, contacts, or voice recordings between devices when both are in the same program.

To send or receive contacts, choose the Contacts program and select one or more contacts from the list. Then tap on the menu control in the upper left corner to show the text menus. Then choose Send or Receive from the File menu.



Tap here to see the text menus



To send or receive a note, go to the NoteTaker program, select a note from the list of notes, and then choose Send To and Infrared Recipient or Receive from the File menu.

To send or receive a voice recording, go to the Voice Recorder program, choose a recording from the list of voice recordings, and then choose Send To and Infrared Recipient or Receive from the File menu.

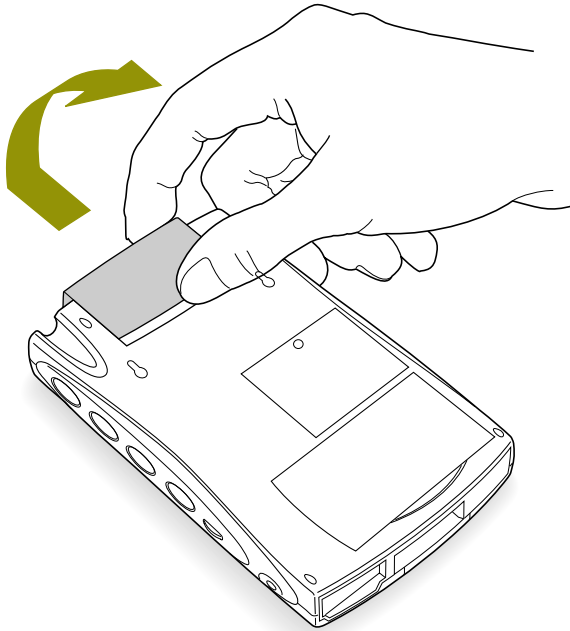
# Adding a Data Storage Card

To install a CompactFlash data storage card in your Nino, follow these steps:

- 1 Open the door to the CompactFlash data storage card compartment on the back of your Nino.**

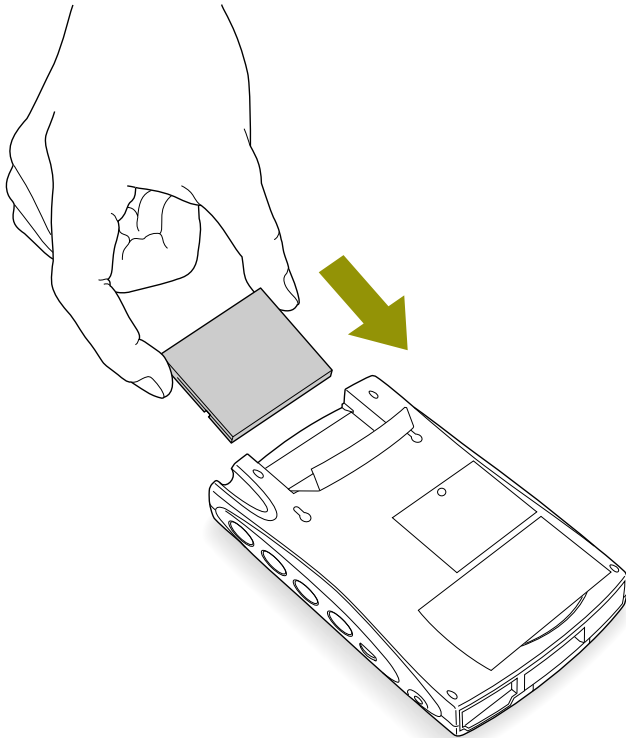
Push the door up and then flip it up. (The Nino can be on or off.)

- 2 Identify the connecting edge of the card. (There may be an arrow symbol on the card to help you do this.)**



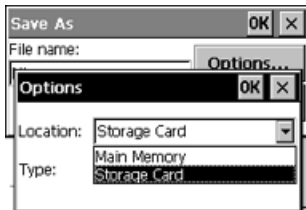
### 3 Insert the CompactFlash card.

The ridge on the back edge of the card should be facing up.  
(This allows you to easily remove the card when you need to.)



### 4 Close the door.

You now have the option of saving data to the card. In NoteTaker, for example, create a new note and then choose Save As from the File menu. Tap Option and then the location arrow to choose the storage card.



# Taking Care of Your Nino

## **General handling**

Avoid dropping the Nino. Keep it away from extremes of hot or cold.

## **Screen care**

Use only the Nino stylus to write or tap on the Nino screen. Using a pen or other sharply pointed object can cause damage. Protect the screen from scratches by keeping the unit in the pouch provided.

## **Battery management**

Conserve battery life by taking these steps:

- Recharge the batteries while you're on the road by plugging in the Nino with the AC adapter whenever circumstances permit.
- Change your Nino's default shut-off time when running on batteries. The default is three minutes. Choose Power from the Settings menu and then choose the Power Off tab.
- Set the backlight feature to turn off automatically when running on battery power. Choose Display from the Settings menu.
- Disable sounds you don't need to hear. Choose Volume & Sounds from the Settings menu.

## **Memory and task management**

Manage the amount of memory allocated to programs and storage. Choose System from the Settings menu and then choose the Memory tab. You can end a task (program), or switch to a different task from the Task Manager tab.

## **Cleaning and maintenance**

Clean your Nino casing with a damp, soft cloth. To clean the screen, turn off the unit and then use a damp cloth or a moistened pad designed specifically for computer monitor screens.

## **And finally...**

For worry-free use of your Nino, dock it whenever you're near your PC. This recharges the batteries (if your Nino Dock is plugged in to AC power), and synchronizes information with your PC. Docking frequently protects your data.

***I can't see anything on the Nino screen.***

Make sure the unit is on and adjust the screen contrast.

***Tapping or using other software controls doesn't seem to work.***

If smARTwriter is active, make it inactive by tapping its icon in the icon tray.

***I get a screen message saying the backup battery is running low and I should replace it.***

The rechargeable backup battery on the Nino is not removable. Dock the Nino or plug it in with the AC adapter in order to recharge the backup battery.

***Tapping the screen doesn't seem to work or produces unexpected results.***

You may need to recalibrate the Nino. Hold down the Exit button, and then press the Action button to display the Calibration screen.

***The Nino screen is frozen and nothing happens when I tap the screen or press the Quick Start buttons.***

Using the end of a paperclip, press the Soft Reset button on the back of the unit. This restarts the Nino without erasing any stored information.

***Even after pressing the Soft Reset button, the screen is still frozen.***

Remove the batteries. Plug in the Nino to AC power and then use the end of a paperclip to press the Soft Reset button on the back of the unit.

***My battery doesn't last long enough.***

See Battery Management in the previous section of this guide.

If you can't find an answer to your problem here, in the *Microsoft Palm-size PC User's Guide*, from on-line Help, or at the Nino or Microsoft Windows CE Web sites, call Philips for telephone support. Refer to the Philip's Support Card that comes with your Nino for the phone number nearest your location.



# Nino Specifications

<b>Processor</b>	<ul style="list-style-type: none"><li>■ MIPS-based Philips 32-bit RISC processor @ 75 MHz</li></ul>
<b>System memory</b>	<ul style="list-style-type: none"><li>■ RAM - 4 MB or 8 MB EDO RAM</li><li>■ ROM - 8 MB Fast Page Mode ROM</li></ul>
<b>Dimensions/weight</b>	<ul style="list-style-type: none"><li>■ Size: approx. 134 x 87 x 20mm (5.25" x 3.41" x .75")</li><li>■ Weight: approx. 220 g (7.8 oz.) with batteries</li></ul>
<b>Communications</b>	<ul style="list-style-type: none"><li>■ Integrated low power 19.2-Kbps data/fax modem included on the 320 model</li></ul>
<b>Expansion</b>	<ul style="list-style-type: none"><li>■ 1 CompactFlash Card slot</li><li>■ Replaceable ROM</li></ul>
<b>Display</b>	<ul style="list-style-type: none"><li>■ Low power, transfective LCD display (320x240 pixels, 0.24 mm dot pitch), 4 shades of gray</li><li>■ High brightness Electroluminescent (EL) Backlighting</li><li>■ Touchscreen</li><li>■ Contrast control dial</li><li>■ Indicator lights for Charging and Alarm/Message status</li></ul>
<b>Power</b>	<ul style="list-style-type: none"><li>■ NiMH battery pack, or 2 AA batteries</li><li>■ Built-in fast charger for battery pack</li><li>■ DC Power Jack</li><li>■ CR2025 lithium backup battery (rechargeable, nonremovable)</li></ul>
<b>Audio</b>	<ul style="list-style-type: none"><li>■ Audio In (unidirectional microphone)</li><li>■ Windows 95-compatible sound compression: up to 16 minutes recording time per 1 MB</li><li>■ Audio Out for .wav file playback and DTMF generation (auto dialing)</li></ul>
<b>System I/O ports</b>	<ul style="list-style-type: none"><li>■ RS-232 serial up to 115 Kbps</li><li>■ IrDA infrared transceiver, supports up to 115 Kbps</li></ul>
<b>User Input</b>	<ul style="list-style-type: none"><li>■ 4 Program buttons</li><li>■ Rocker switch for scroll up and scroll down</li><li>■ Action and Exit buttons</li><li>■ Stylus</li><li>■ Voice</li></ul>
<b>Software</b>	<ul style="list-style-type: none"><li>■ Microsoft Windows CE for the Palm-size PC</li><li>■ T9 text input by Tegic Communications, Inc.</li><li>■ smARTwriter handwriting recognition by Advanced Recognition Technologies, Inc.</li><li>■ Pocket Commander voice command by Advanced Recognition Technologies, Inc.</li><li>■ Expense Manager</li></ul>

## Regulatory information

### **Declaration of conformity**

This device complies with Part 15 of the FCC rules. Operation is subject to the following two conditions: (1) This device may not cause harmful interference, and (2) this device must accept any interference received, including interference that may cause undesired operation.

**Responsible Party Name** Philips Mobile Computing Group

**Telephone** 1-888-275-8356

**Product/Model** Nino

### **FCC warning statement**

This equipment has been tested and found to comply with the limits for a Class B digital device, pursuant to Part 15 of the FCC Rules. These limits are designed to provide reasonable protection against harmful interference in a residential installation. This equipment generates, uses, and can radiate radio frequency energy. If not installed and used in accordance with the instructions, it can cause harmful interference to radio communications. However, there is no guarantee that interference will not occur in a particular installation. Determine if the equipment does cause interference to radio or television reception by turning the equipment off and on. The user is encouraged to try to correct the interference by one or more of the following measures:

1. Where it can be done safely, reorient or relocate the receiving antenna.
2. Increase the separation between the equipment and receiver.
3. Connect the equipment into an outlet on a circuit different from that to which the receiver is connected.
4. Consult the dealer or an experienced radio/TV technician for help.

Changes or modifications not expressly approved by the manufacturer could void the user's authority to operate the equipment. Shielded interface cables must be used when operating this device or the user's authority to operate this equipment could be voided.

### **Industry Canada Statement**

This Class B device meets all requirements of the Canadian Interference-causing equipment regulations.

Cet appareil numérique de la Class B respecte toutes les exigences du règlement sur le matériel brouilleur du Canada.

## VCCI Class 2 Statement

### 情報処理装置等電波障害自主規制について

この装置は、情報処理装置等電波障害自主規制協議会 (VCCI) の基準に基づく第二種情報技術装置です。この装置は、家庭環境で使用することを目的としていますが、この装置がラジオやテレビジョン受信機に近接して使用されると、受信障害を引き起こすことがあります。

取扱説明書に従って正しい取り扱いをしてください。